



RheinHunsrück *Entsorgung*



RheinHunsrück *Energie*



YOUR INNOVATIVE SUPPLIER AND WASTE MANAGER

WE DO IT!



2005

Foundation of
**Rhein-Hunsrück
Entsorgung (RHE)**

2010

Construction of the
heating systems in
Simmern, Kirchberg
and Emmelshausen

2012

Installation of the solar
plant on the landfill
body in Kirchberg

2019

Partnership with Bürger-
werke and launch of the
local brand
„Rhein-Hunsrück Energie“

2021

Biogas fermenta-
tion plant

2022

Comissioning of
electric-excavator

ZELLER
AKTIV FÜR DIE UMWELT

Entsorgung | Recycling | Naturenergie

In der Schlicht 6 | 67112 Mutterstadt

Tel.: +49 (0) 6234 9474 - 0

E-Mail: info@zeller-recycling.de

www.zeller-recycling.de

www.shop.zeller-recycling.de



JAKOBY + SCHREINER
Ingenieurbüro für Bauwesen · Beratende Ingenieure

Ingenieurleistungen für kommunale Träger und
private Investoren. Mit Verantwortung in Ihrer Region.

📍 Simmerner Straße 18, 55481 Kirchberg
☎ +49 6763 / 40 33 ✉ info@jakoby-schreiner.de
🌐 www.jakoby-schreiner.de



INNOVATIVE WASTE RECYCLING PROCESS

About 100 of our employees collect, process and dispose of waste using the most modern technologies. Technology and intelligent recycling processes for recycling more than over 103.000 inhabitants from 137 communities. The waste is collected separately by fraction and returned to various economic cycles. As a result, only a small part of the recyclable residual waste has to be disposed of in a landfill.



OB KONVENTIONELL ODER INNOVATIV

wir übernehmen Planung, Genehmigung, Ausschreibung und Bauleitung für Ihre Anlage zur biologischen Abfallbehandlung

HAUPTSACHE: PRAXISGERECHT

SCANNEN & MEHR ERFAHREN



Witzenhausen-Institut für Abfall, Umwelt und Energie GmbH
Werner-Eisenberg-Weg 1, 37213 Witzenhausen
T: 05542-9380-0 | www.witzenhausen-institut.de





SOCIAL & COMMUNITY RESPONSIBILITY

With based on performance pay, an attractive pension plan, opportunity for further training and interesting work time model, we are socially responsible for our committed and competent employees.

We fulfill our responsibility to society by long-term safety of waste disposal at a high ecological level, due to further development of the material and energy use of various waste streams, as well as by charging for waste that is as fair as possible to those who cause it.

Since 2008 RHE collects lightweight packaging in the county on behalf of the dual systems following the thought „one-stop service“. Since 01-01-2022 the system has been changed to the yellow bin.

Ver- und Entsorgung aus einer Hand.

- Baustoffe & Schüttgüter
- Mit Lieferung & Kranentladung
- Containerdienst für Abfälle
- Recycling-Baustoffe

Hellerwald GmbH

Hellerwaldstr. 10 • 56154 Boppard-Buchholz • Telefon: +49 (0) 67 42 - 89 59 70 • Mail info@hellerwald.de • www.hellerwald.de



ECO FRIENDLY WASTE CONCEPT

Our goal is modern waste management using as many recyclable materials as possible, which are kept in the economic cycle, and the residual waste is pretreated in such a way that future generations are not unnecessarily burdened. Residual waste, paper, bio-waste and lightweight packaging we collect out on a regular basis, bulky garbage by agreement. In addition, the waste can be conveniently transported directly to our recycling center in Kirchberg.

At the mechanical-biological pretreatment plant (MBT) in Linkenbach, residual waste is converted into a fuel substitute for MHKW (waste-to-energy plant) (about 40% of residual waste); and another 20% in the process of rotting turn into water and CO2 among others. The rest, which can no longer be recycled (approx. 40%), is taken to a landfill near Neuwied and disposed of in an environmentally friendly way. We cover backfilled landfills according to the legal requirements and control them on an ongoing basis. Leaking seepage water is treated professionally.



WASTE FACTS*

Residual waste	10.000 tons
Biowaste	14.000 tons
Green waste	24.000 tons
Paper	9.000 tons
Light packaging	4.000 tons
Bulky waste	2.000 tons
Wood waste	3.000 tons

* In private households p.a.

HERRMANN

auf uns ist Verlass!

Rohrreinigungsdienst • Kanal-TV • Erdbau • Abbruch
Hauptstraße 28 • 55483 Schlierschied
Telefon 06765-7710

www.gebrueder-herrmann.de



**HYDRAULIK
SCHMIDT GmbH**

Hydraulik Schmidt GmbH
Industriepark 11, 55469 Simmern
Telefon: 0 67 61 / 64 56
E-Mail: info@hydraulik-schmidt.de

www.schmidt-hydraulik.de

From the organic waste can to the bio-energy waste can

BIOWASTE FERMENTATION PLANT

We turn an organic waste can into a **bioenergy** can.

In May 2021, together with the citizens of the Rhein-Hunsrück district, we put our own biowaste fermentation plant into operation, placing us at the forefront of this technology throughout Europe: This special combination of plant and fermentation technology is unique and creates completely new possibilities - such a plant is only available here in Kirchberg!



KomPOST XTRA

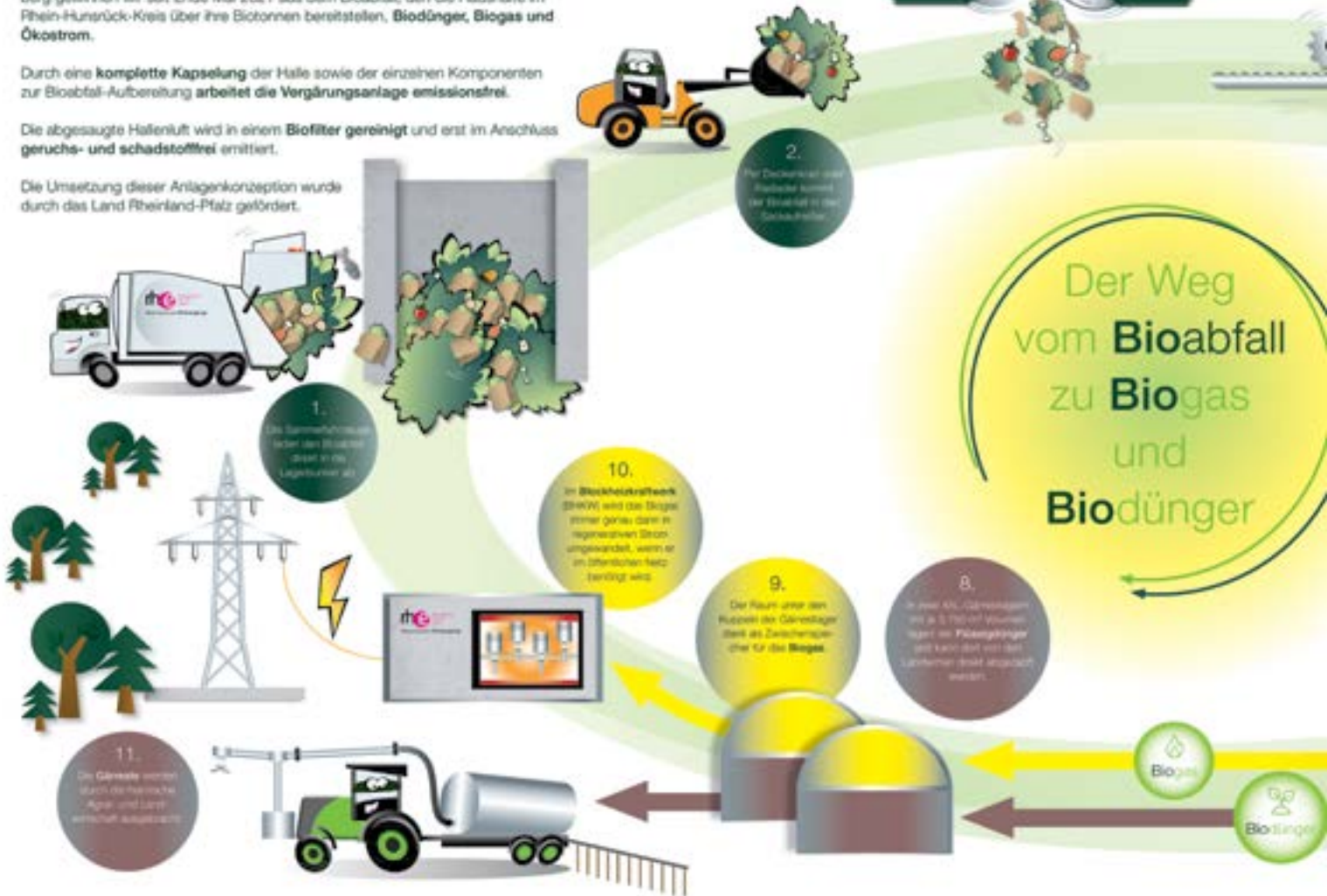
RHE hat die Nase vorn: Unsere neue Biogut-Vergärungsanlage in Kirchberg

In der **Biogut-Vergärungsanlage** auf dem Gelände der KreisMülldeponie Kirchberg gewinnen wir seit Ende Mai 2021 aus dem Bioabfall, den die Haushalte im Rhein-Hunsrück-Kreis über ihre Biotonnen bereitstellen, **Biodünger, Biogas und Ökostrom**.

Durch eine **komplette Kapselung** der Halle sowie der einzelnen Komponenten zur Bioabfall-Aufbereitung **arbeitet die Vergärungsanlage emissionsfrei**.

Die abgesaugte Hallenluft wird in einem **Biofilter gereinigt** und erst im Anschluss **geruchs- und schadstofffrei** emittiert.

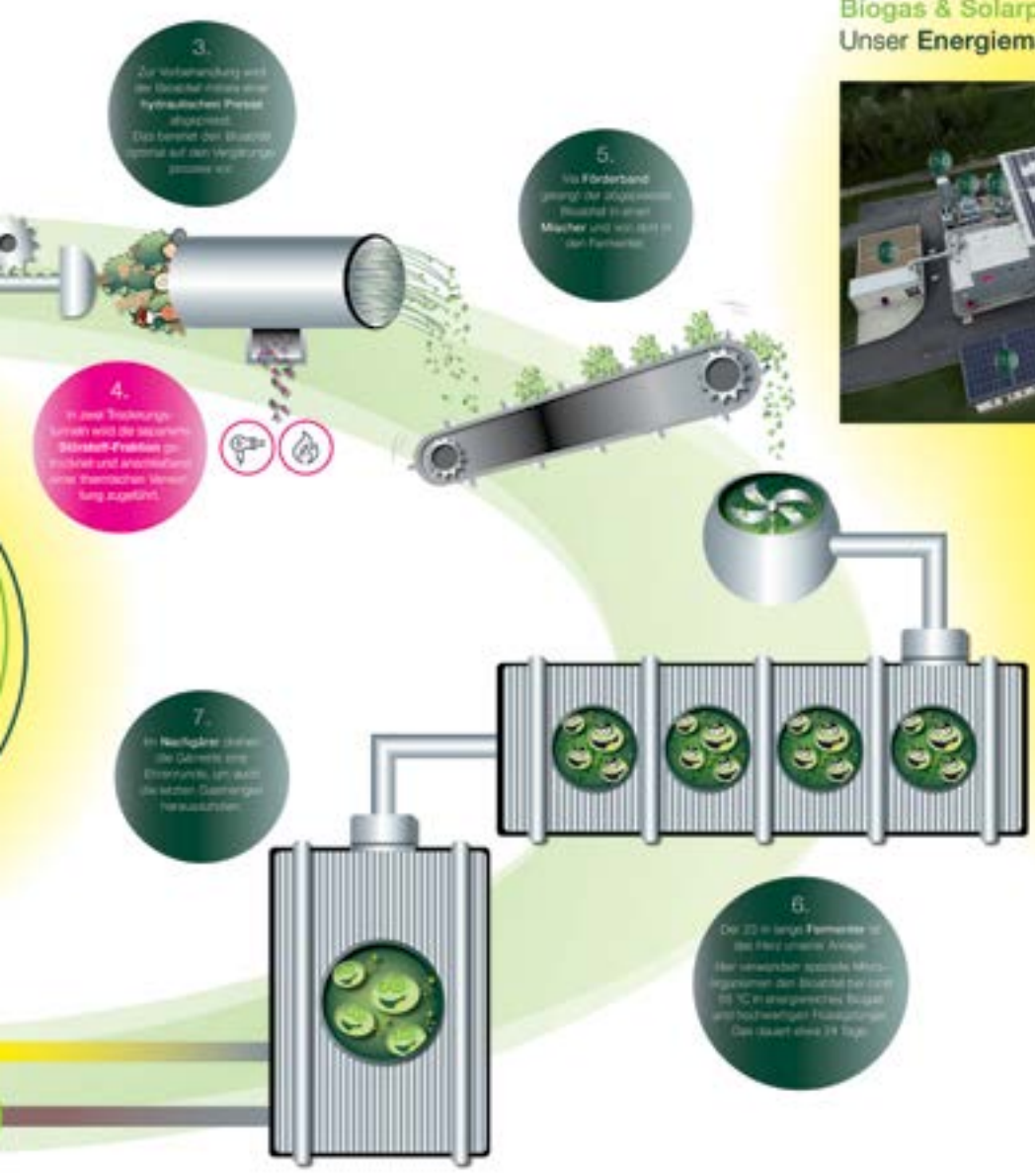
Die Umsetzung dieser Anlagenkonzeption wurde durch das Land Rheinland-Pfalz gefördert.





ST XTRA

KomPOST XTRA



3.
Zur Verfeinerung wird der Bioabfall mittels einer hydraulischen Presse zerkleinert. Das fördert den Verdauungsprozess vor.

4.
In zwei Trenntrichtern wird die saurem Stoff-Fraktion getrennt und anschließend einer thermischen Verwertung zugeführt.

5.
Im Förderband gelangt der abgemahlte Bioabfall in einen Mäher und wird dort in den Feinstack.

7.
Im Nachklärer werden die Gärreste aus dem Biogas, um einen weiteren Gärungsprozess zu unterstützen.

6.
Der 22 m lange Fermenter ist das Herz unserer Anlage. Hier unterziehen spezielle Mikroorganismen den Bioabfall bei rund 55 °C in anaerobem Biogas und hochreineren Flüssigdünger. Das dauert etwa 24 Tage.

Biogas & Solarpower: Unser Energiemanagement greift ineinander



- 12.** Im Biogas wird gasförmiges Methan die Abfall aus der Halle und liefert sie vor unangenehmen Gerüchen.
- 13.** Aus der Wärme im Abgas des Biogaswerters wird Strom für die Eigenversorgung erzeugt.
- 14.** Im Wärmepuffer wird die Rest-Abwärme des BHKW zwischengespeichert und für die Wärmeversorgung von Fermenter, Nachklärer, Trocknungstunnel und verschiedenen Gebäuden auf der Industrieanlage genutzt.
- 15.** Photovoltaikanlagen in Ost-West-Ausrichtung auf dem Hallendach und dem Betriebsgebäude garantieren genügend zusätzlichen Strom zur Eigenversorgung der Anlage.



Erneuerbar
Regional
Unabhängig

RheinHunsrück **Energie**

Für Euch stehen wir unter Strom!

RHE has been addressing the issue of sustainability for many years. With the introduction of the organic waste garbage can in 1993, the establishment of numerous tree and shrub cuttings collection points since 1998, and the new biowaste fermentation plant, we have gradually developed into a local supplier of renewable energy. For us, this means value creation and jobs in the region, home and future. Our **brand RheinHunsrück Energie** also stands for these values, which we bring renewable and regional citizen's electricity directly into the households of the Rhein-Hunsrück district.

100% Green Electricity

With the help of 7,100 photovoltaic modules on an area of 17,000 m² at the Kirchberg site

we produce 100% green electricity, which is fed into the public power grid. The income generated helps us to stabilize our operating costs. They are thus another valuable component of our economic activities.

Keep informed and switch to your regional energy provider:

Web: www.rh-energie.de

Tel.: 06763 30 20 0

See our new image film under:

Web: www.rh-entsorgung.de

Maschinenring
Hunsrück



Christian Walter

Betriebsberatung, Sekundärrohstoffe,
Öffentlichkeitsarbeit, Zukunftsprojekte

MR Hunsrück GmbH

Weinenweg 5
55469 Ohlweiler

Tel.: 06761 - 960 30-15
Mobil: 0157 - 357 740 14

cwalter@mr-hunsrueck.de
www.mr-hunsrueck.de

GREEN WASTE CONCEPT*

sold heat quantity	10.000.000 kWh
amount of fuel required approx.	3,500 tons
saved heating oil equivalent approx.	1.000.000 liters
CO ₂ savings	2,000 tons
Soil additives	10.000 tons

* Calculation p.a.



GREEN WASTE BECOMES HEAT

Our green waste concept stands for regional value creation. We create jobs, avoid oil and natural gas imports, save fossil resources and contribute to the reduction of CO₂ emissions. We shred, dry and screen green waste and reuse it as an ecological soil additive in agriculture or viticulture on the one hand, and as a valuable fuel for our heating plants in Simmern, Kirchberg and Emmelshausen on the other.

We supply more than 40 buildings with heat via local heating networks - including school, complexes with sports halls, swimming pools and several retirement homes.



Bernhard Lindenhof

Der Dienstleister für Kommunen,
Industrie, Weinbau, Land- und
Forstwirtschaft

55546 Frei-Laubersheim Tel.: 06709 96000 Fax: 06709 960469 E-Mail: zentrale@bernhard-lindenhof.de www.bernhard-lindenhof.de

SCHREDDERARBEITEN • SIEBARBEITEN • BRENNSTOFFAUFBEREITUNG • TIEFENLOCKERUNG
TRAUBENVOLLERNTER • STOCKRODUNG • BODENBEARBEITUNG • MULCHARBEITEN • AUSSAAT

LEARNING TO AVOID WASTE

If you want to change the world, start with the children!

That is why we at **RHE** have set up the „**Extracurricular Learning Site for Environmental Education**“ (ASL) on the website of our district landfill in Kirchberg, in order to raise ecological awareness among children and youth early on and introduce them to our waste management concept of „avoid before recycle before dispose“.

Every year, around 40 groups with a total of around 1,000 children and young people learn how to deal with our environment in an environmentally friendly and sustainable way.

Please make an appointment with us before your visit:

Phone: 06763 3020-41

Mail: asl@rh-entsorgung.de

We look forward to seeing you!



THE ASL INCLUDES:

Tactile boxes

- Waste is blindly felt and assigned to the correct disposal route

Waste cemetery

- Makes rotting time of different materials transparent

Herb bed and vegetable greenhouse

- Demonstrate the effect of compost

Insect and ant terrariums

- illustrate various natural cycles

Waste archaeology

- imparts knowledge of progress in waste management

Leachate treatment

- explains the processes involved in purifying water

Biogas production

- is explained using sheep as an example

Solar thermal energy, photovoltaics and wind power

- show alternative ways of energy production

Conversion of kinetic energy into electricity

- demonstrated on a bicycle





OUTLOOK


As part of a funding commitment for the acquisition of an electric excavator from the special „Energy and Climate Fund“, delivery of the first electric and battery-powered RHE handling machine is imminent in early summer 2022. This will enable around 30,000 tons of waste to be handled on our site with low emissions in the future. The goal is to use as much self-produced PV green electricity as possible for

this. In addition, in the coming years we will push ahead with the gradual conversion of our entire fleet of vehicles and machinery to alternative, climate-friendly drive technologies. In 2023, the construction of a further solar power plant with a planned output of around 3 MWp is planned on the old landfill site in Gondershausen.

Bank in der Bux:
sparkasse to go.

Regional.
Digital.
Überall. 😊



 Kreissparkasse
Rhein-Hunsrück

 Die Sparkassen-App:
kostenlos downloaden und los geht's!



Scherer Holzbau
GmbH & Co. KG

Neuerkirch/Simmern
Alterkölzer Straße 9

Telefon: 0 67 61 / 51 28

info@scherer-holzbau.de
www.scherer-holzbau.de



Our facts

Type of company:	Institution under public law
Foundation:	March 2005
Number of employees:	approx. 83
Operating performance:	15 million euros
Balance sheet total:	50 million euros
Equity ratio:	15.8
Produced heat:	14 Mio kWh
Produced electricity:	7 Mio kWh



**Management
Service
Ideen**

RheinHunsrück *Entsorgung*

RHEINHUNSRÜCK-ENTSORGUNG

Institution under public law
Weitersheck
55481 Kirchberg

Phone: 06763 3020-0
Fax: 06763 3020-900

Mail: info@rh-entsorgung.de

Web: www.rh-entsorgung.de



OPENING HOURS RECYCLING CENTER

Monday to Friday 08.30 – 16.15 hrs
Lunch break 11.45 – 12.45 hrs
Saturday 08.30 – 11.45 hrs
If you have any questions, please contact us
06763 30 20-15.

TOP PRIORITY: AVOID WASTE

By being a little mindful, everyone, without exception, can help prevent waste.
Here are a few tips:

- ☑ Make sure to buy reusable bottles.
- ☑ Use cloth carrier bags instead of plastic bags
- ☑ Buy refills
- ☑ Make sure to buy products with little packaging
- ☑ Use a bread box for your break instead of aluminum
- ☑ Replace batteries with rechargeable batteries if possible

AVOID WASTE & GIVE PLEASURE

With our exchange and give-away market, we extend the lifecycle of still usable products. The market helps to avoid waste and to give joy to others.

Click here to go to the swap and giveaway market
www.verschenkmarkt.rh-entsorgung.de